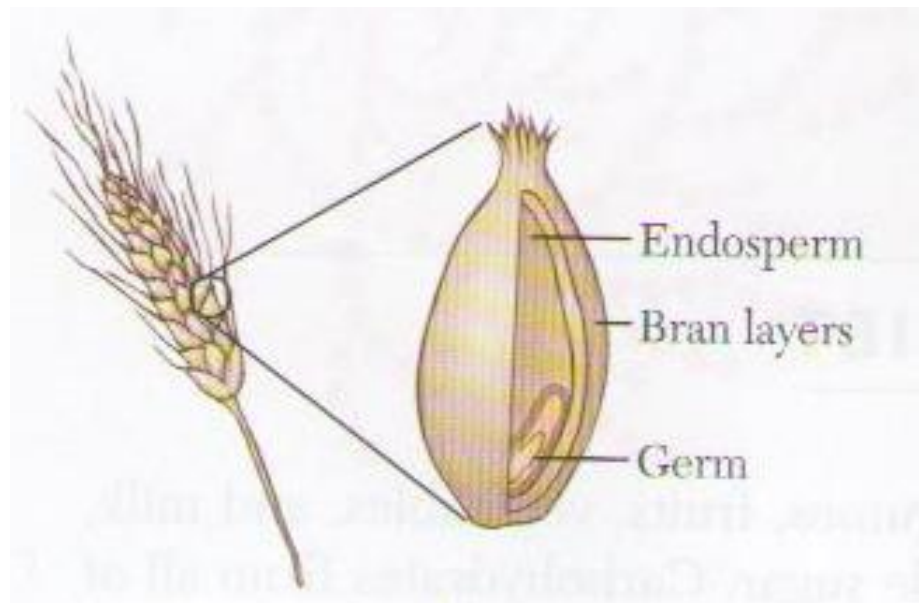


# Grain and Seed Word Search

G E C A F F C H A T D E G N D O T S G  
 R N C A N W L L K R M B R E N N H P R O  
 A D K B W L H N N B F U L P R W R R O  
 I O W R I U W E W R F C W I N M E T W  
 N B R A N B K E A E A K F G N I S E H  
 S E B O N C R S O T L W D L H N H K E  
 T R U U O K Y T R A K H O B O G I M A  
 A M F S W W E L N M F E L C R U N E R  
 K K L E I C H A F F T A F R E S G A C  
 E E A E N E A K S F F T Y L E Y K L O  
 R R L D G A S T A L K R L E O S H A B  
 N H K B U Y K P C H A O A T S U N I R  
 E N D O S P E R E T H R E S H A R N A  
 L W E B R E W A A L K E R M U B A K K  
 R H R U L L F L E N T B A R L E Y F N  
 A E M E N D O S P E R M E I L L Y L E  
 N A G R A M I C O R N B R E A M L Y L

Grain  
 Seed  
 Wheat  
 Rye  
 Spelt  
 Corn  
 Buckwheat  
 Oats  
 Barley  
 Bran  
 Germ  
 Endosperm  
 Kernel  
 Stalk  
 Chaff  
 Threshing  
 Hull  
 Winnowing  
 Flour  
 Meal  
 Cob  
 Grow



<http://dontwastethecrumbs.com/wp-content/uploads/2013/05/wheat-berry-diagram.jpg>