

Morris County Park Commission - 2021/22 White-tailed Deer Management Program

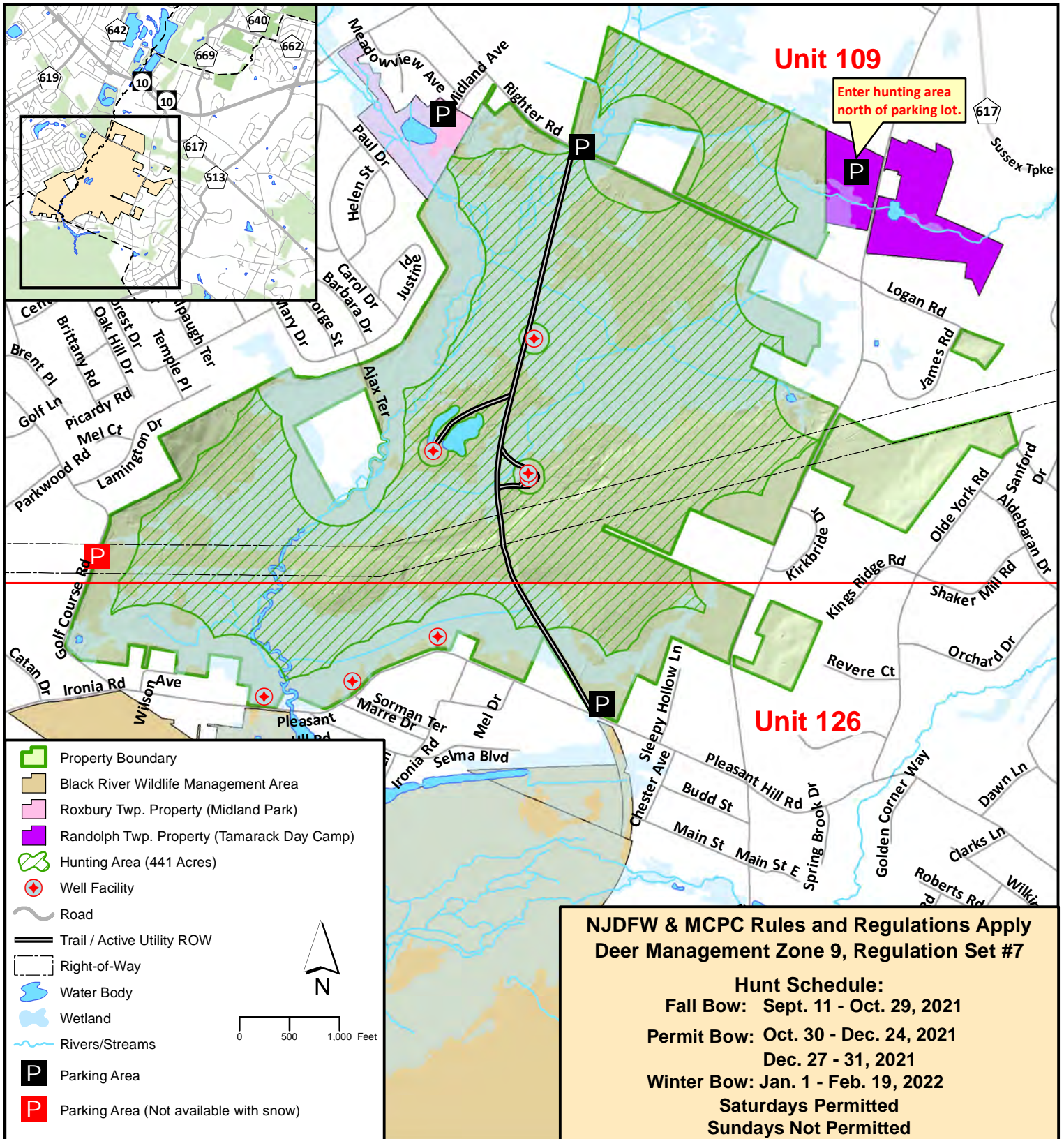
Alamatong Wellfield

Facility of the Morris County Municipal Utilities Authority

Chester, Roxbury & Randolph Townships

Access Permit Required

Date: 8/5/2021



Note: All hunters are required to maintain a distance of 450 feet from buildings and school playgrounds, even if they are not occupied. This map is intended to serve as a general guideline as to park boundaries and safety zones. The Morris County Park Commission does not guarantee that the information within is 100% accurate. Ultimately the hunter is responsible for adhering to safety zone standards while hunting in the park.