

# Morris County Park Commission - 2021/22 White-tailed Deer Management Program

## Lewis Morris County Park - FIREARM

Harding, Mendham & Morris Townships

**Access Permit Required**

Date: 8/5/2021

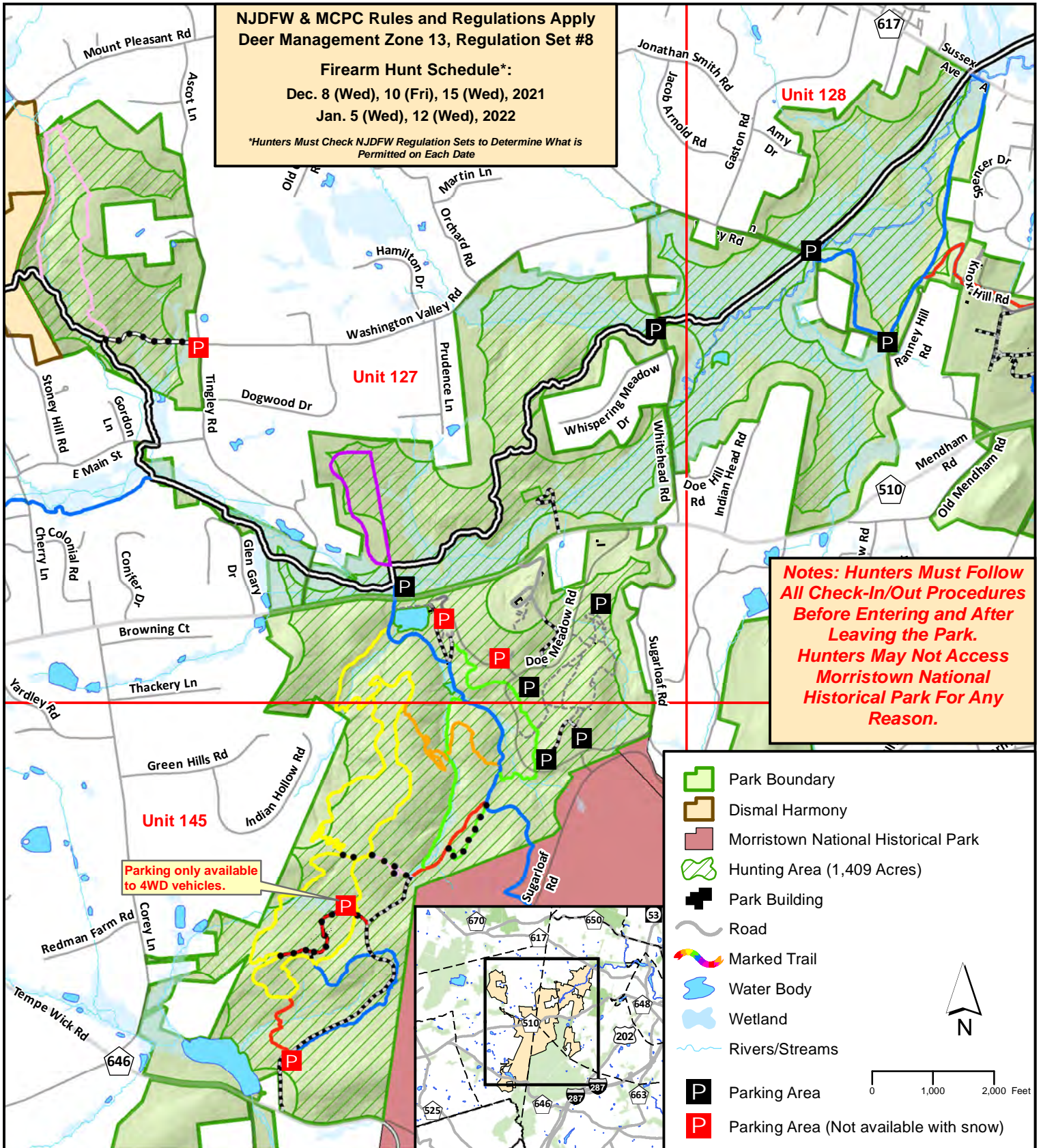
NJDFW & MCPC Rules and Regulations Apply  
Deer Management Zone 13, Regulation Set #8

Firearm Hunt Schedule\*:

Dec. 8 (Wed), 10 (Fri), 15 (Wed), 2021

Jan. 5 (Wed), 12 (Wed), 2022

\*Hunters Must Check NJDFW Regulation Sets to Determine What is Permitted on Each Date



**Notes: Hunters Must Follow All Check-In/Out Procedures Before Entering and After Leaving the Park. Hunters May Not Access Morristown National Historical Park For Any Reason.**

Parking only available to 4WD vehicles.

**Note: All hunters are required to maintain a distance of 450 feet from buildings and school playgrounds, even if they are not occupied. This map is intended to serve as a general guideline as to park boundaries and safety zones. The Morris County Park Commission does not guarantee that the information within is 100% accurate. Ultimately the hunter is responsible for adhering to safety zone standards while hunting in the park.**