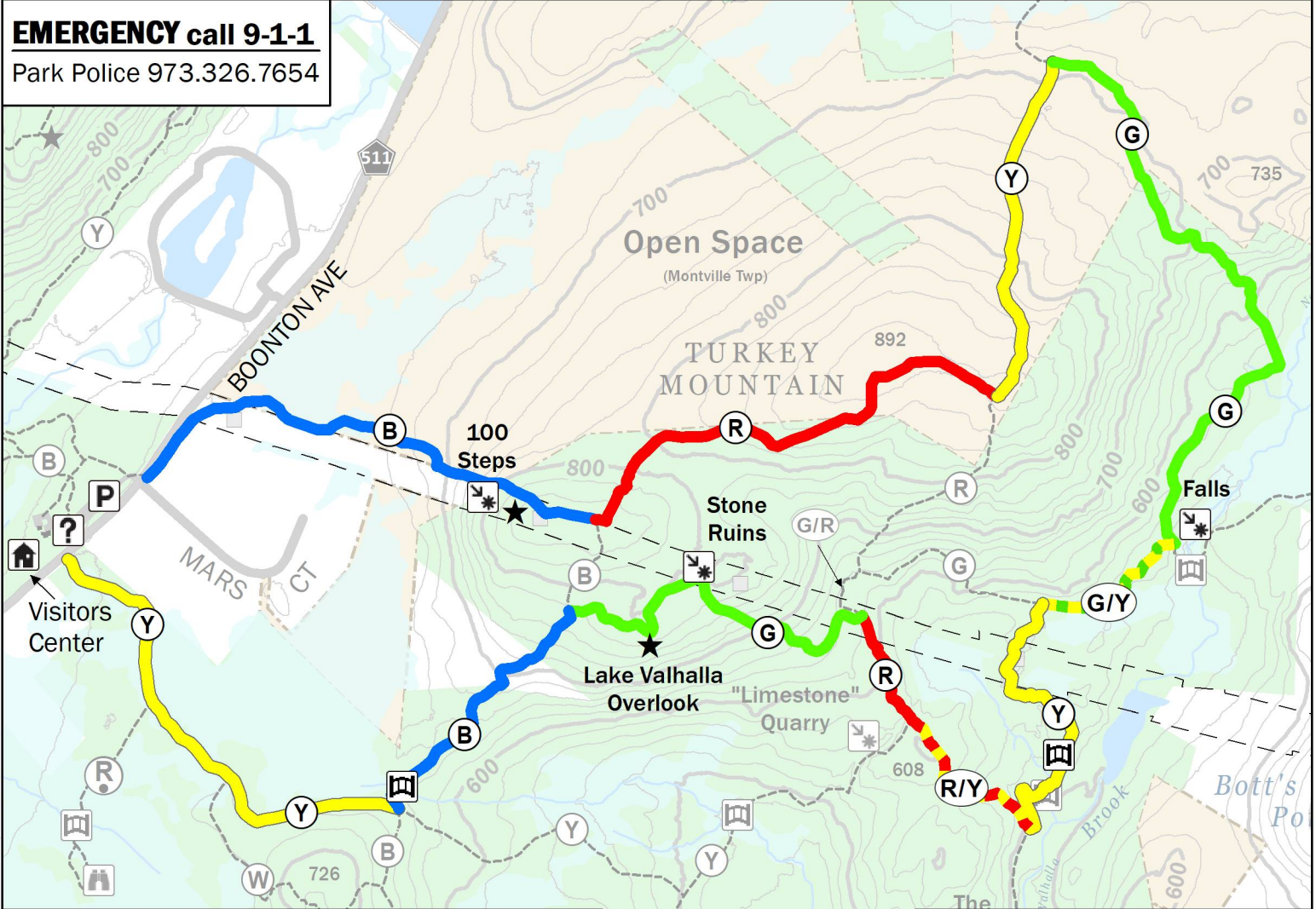


Pyramid Mountain Natural Historic Area

EMERGENCY call 9-1-1

Park Police 973.326.7654



FALLS HIKE

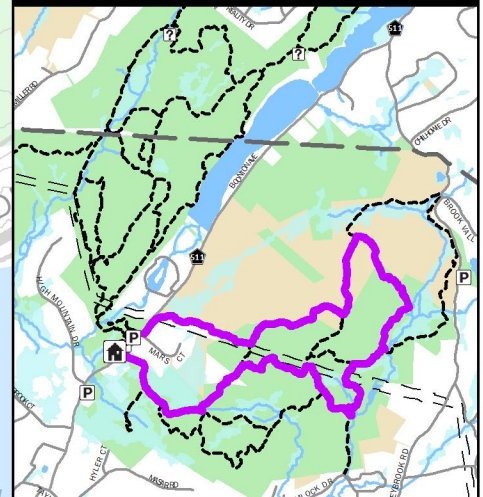
Hike Time: 2.5 hours (approx.)

Hike Length: 4 miles

From the Boonton Avenue Visitors Center parking lot, cross Boonton Avenue at the crosswalk and turn left. Just after Mars Court follow these trail blazes:

Blue > Red > Yellow > Green > Green/Yellow > Yellow > Red/Yellow > Red > Green > Blue > Yellow

LOCATOR MAP



Blaze Key

Hike Blaze Colors

- Trail Begins
- Trail Continues
- Turn Left
- Turn Right
- Trail Ends

- Blue
- Green
- Red
- Yellow

- Bridge
- Directory
- High Tension Tower
- Overlook
- POI
- Parking
- Viewing Area
- Visitors Center
- Foot Traffic Only
- Public Vehicle Road
- Lakes/Ponds
- Stream
- Wetlands
- MCPC Park Land
- Municipal Open Space
- Power lines



Map updated on 8/25/2020 based on v 2.0.4

Elevation contour lines at 20 foot intervals

\\Parkdata\mcpcc_gis_center\GIS_PROJECTS\MCPCCGIS\OfficialTrailMaps\PyramidMountain\RecommendedHikes\Hike_PM_2.0.4_FallsHike.mxd