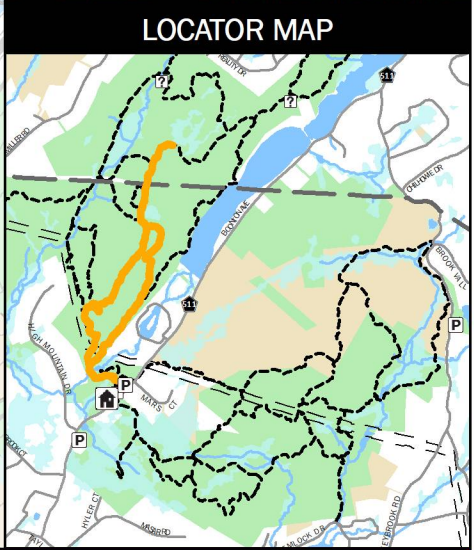
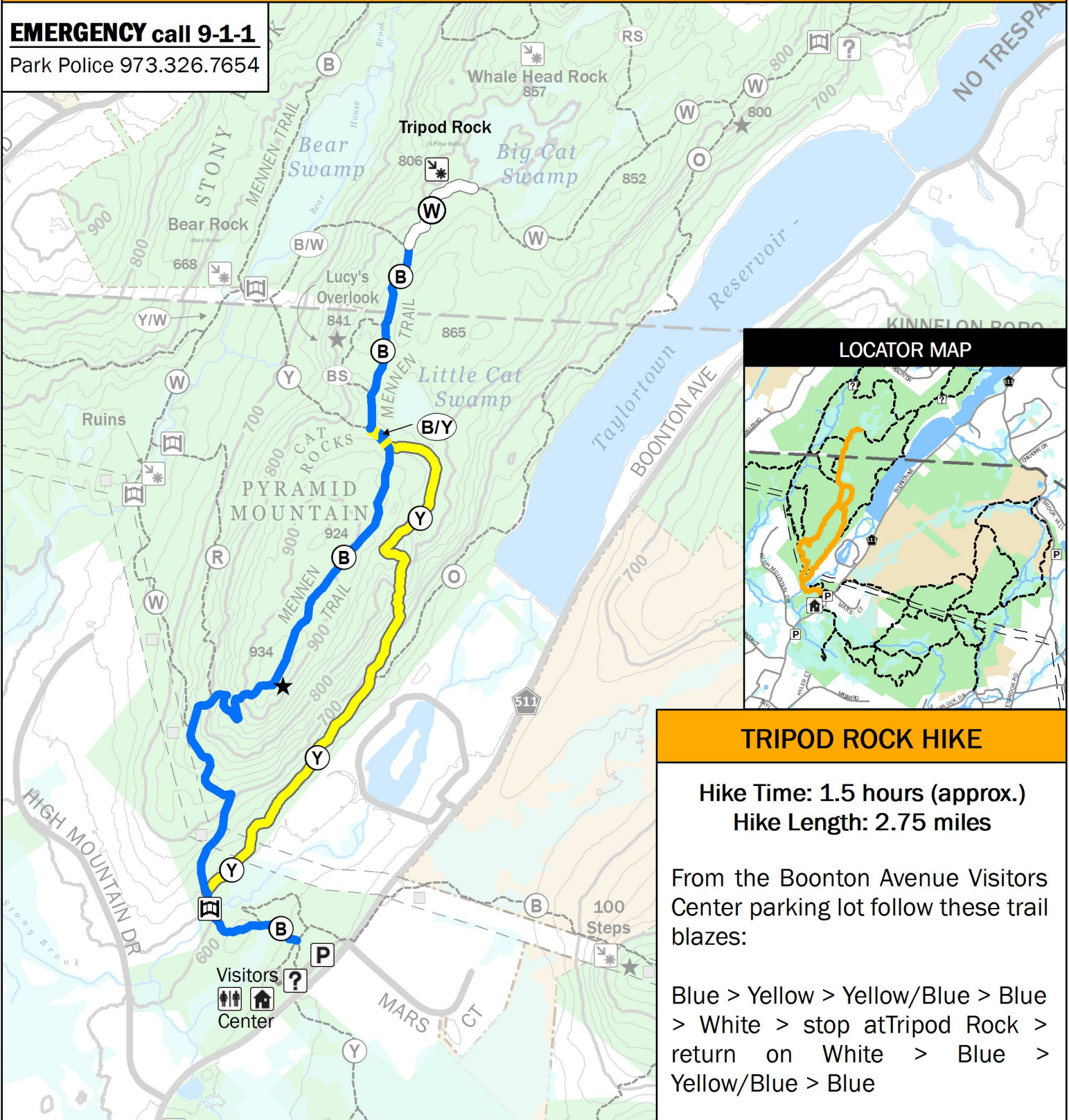


**Pyramid Mountain Natural Historic Area**

**EMERGENCY call 9-1-1**

Park Police 973.326.7654



**TRIPOD ROCK HIKE**

**Hike Time: 1.5 hours (approx.)**  
**Hike Length: 2.75 miles**

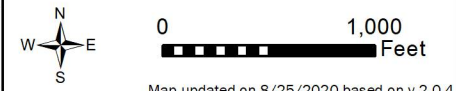
From the Boonton Avenue Visitors Center parking lot follow these trail blazes:

Blue > Yellow > Yellow/Blue > Blue > White > stop at Tripod Rock > return on White > Blue > Yellow/Blue > Blue

Blaze Key	
	Trail Begins
	Trail Continues
	Turn Left
	Turn Right
	Trail Ends

Hike Blaze Colors	
	Blue
	White
	Yellow

	Bridge		Foot Traffic Only		Municipal Open Space
	Directory		Public Vehicle Road		State Open Space
	High Tension Tower		Municipal Boundary		Lakes/Ponds
	Overlook		Stream		Wetlands
	POI		Power lines		MCPC Park Land
	Parking				
	Restroom				
	Visitors Center				



Map updated on 8/25/2020 based on v 2.0.4

Elevation contour lines at 20 foot intervals

\\Parkdata\mcpcc\_gis\_center\GIS\_PROJECTS\MCPCCGIS\OfficialTrailMaps\Working\PyramidMountain\RecommendedHikes\Hike\_PM\_2.0.4\_TripodRockHike.mxd