

### Blaze Key

- Trail Begins
- Trail Continues
- Turn Left
- Turn Right
- Trail Ends

### Trail Blaze Colors

- White - P.P. Main Stem, East to West Trail
- Blue - P.P. Spur Trail

### Signature Trail Markers

- Patriots' Path
- National 9-11 Memorial Trail
- Liberty-Water Gap Trail

**EMERGENCY call 9-1-1**  
Morris County Sheriff's Office  
Patrol Division 973.285.2900

### Legend

- Foot Traffic/Biking/Horses Permitted
- Foot Traffic/Biking Permitted (No Horses)
- Foot Traffic/Horses Permitted (No Biking)
- Foot Traffic Only
- Other Signature Trails
- Unimproved Patriots' Path Route
- Municipal & County Boundary
- Water Features
- Seasonal Access Limitation Area
- Railroad
- Public Vehicle Road
- Bridge
- Point of Interest
- 240 Trail Elevation in Feet
- Trail Directory
- Highway Exit Number
- Train Station
- Parking
- Visitor Center
- County Park Boundary
- Municipal Open Space
- Federal Open Space
- State Open Space
- Nonprofit Open Space

0 0.25 0.5 0.75 1 Miles

**Notes:**  
The National 9-11 Memorial Trail and the Liberty-Water Gap Trail follow along the Patriots' Path Main Stem (White).  
Traction Line - Foot Traffic/Biking Permitted  
Columbia Trail - Foot Traffic/Horses/Biking Permitted

Ver. 2.0.0 Map Updated: January 2023

morris county park commission

## Patriots' Path

enjoy the experience

morris county park commission

# Legend

- Foot Traffic/Biking/Horses Permitted
  - Foot Traffic/Biking Permitted (No Horses)
  - Foot Traffic/Horses Permitted (No Biking)
  - Foot Traffic Only
  - Other Signature Trails
  - Unimproved Patriots' Path Route
  - Municipal & County Boundary
  - Water Features
  - Railroad
  - Public Vehicle Road
  - Bridge
  - Trail Elevation in Feet
  - Highway Exit Number
  - Overlook
  - Parking
  - Point of Interest
  - Trail Directory
  - Train Station
  - Visitor Center
  - Seasonal Access Limitation Area
  - County Park Boundary
  - Municipal Open Space
  - State Open Space
  - Nonprofit Open Space
- 0 0.25 0.5 0.75 1 Miles

**Notes:**  
 The National 9-11 Memorial Trail and the Liberty-Water Gap Trail follow along the Patriots' Path Main Stem (White).  
 Traction Line - Foot Traffic/Biking Permitted  
 Columbia Trail - Foot Traffic/Horses/Biking Permitted  
 Ver. 2.0.0 Map Updated: Jan., 2023

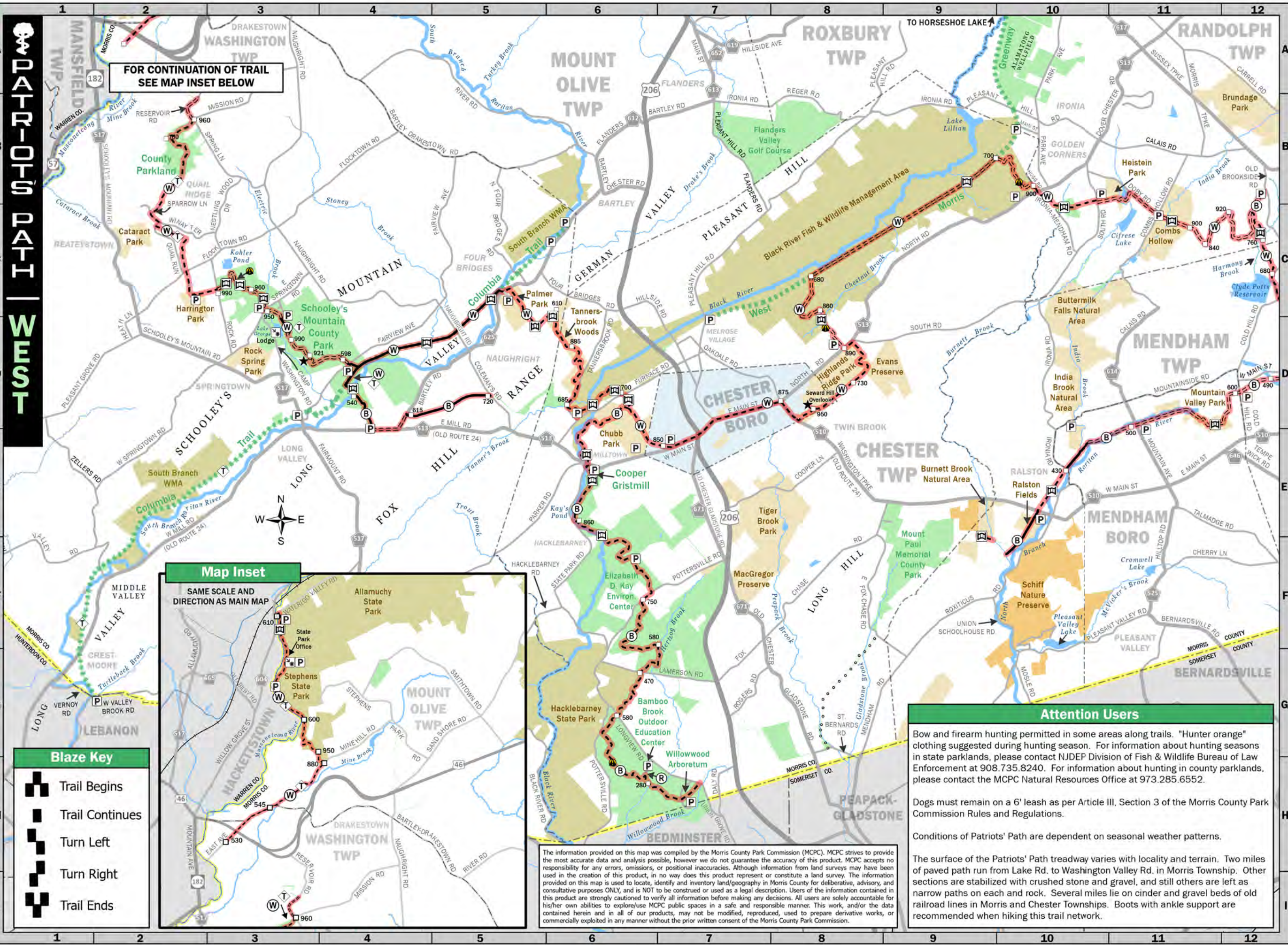
## Trail Blaze Colors

- White - P.P. Main Stem, East to West Trail
- Blue - P.P. Spur Trail

## Signature Trail Markers

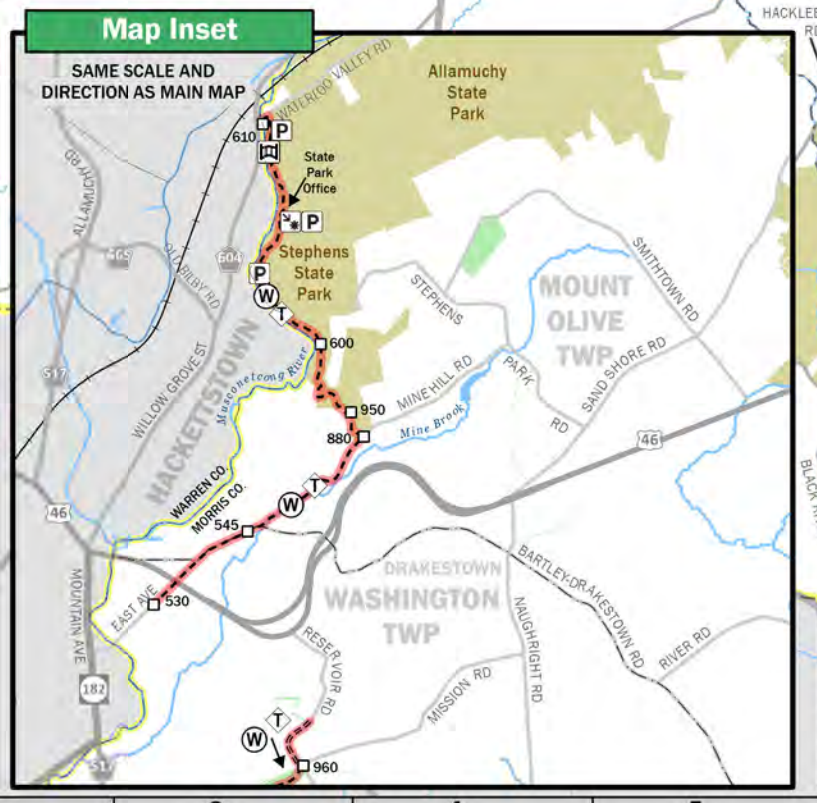


**EMERGENCY call 9-1-1**  
 Morris County Sheriff's Office  
 Patrol Division 973.285.2900



**PATRIOTS' PATH | WEST**

**FOR CONTINUATION OF TRAIL SEE MAP INSET BELOW**



- ### Blaze Key
- Trail Begins
  - Trail Continues
  - Turn Left
  - Turn Right
  - Trail Ends

### Attention Users

Bow and firearm hunting permitted in some areas along trails. "Hunter orange" clothing suggested during hunting season. For information about hunting seasons in state parklands, please contact NJDEP Division of Fish & Wildlife Bureau of Law Enforcement at 908.735.8240. For information about hunting in county parklands, please contact the MCPC Natural Resources Office at 973.285.6552.

Dogs must remain on a 6' leash as per Article III, Section 3 of the Morris County Park Commission Rules and Regulations.

Conditions of Patriots' Path are dependent on seasonal weather patterns.

The information provided on this map was compiled by the Morris County Park Commission (MCPC). MCPC strives to provide the most accurate data and analysis possible, however we do not guarantee the accuracy of this product. MCPC accepts no responsibility for any errors, omissions, or positional inaccuracies. Although information from land surveys may have been used in the creation of this product, in no way does this product represent or constitute a land survey. The information provided on this map is used to locate, identify and inventory land/geography in Morris County for deliberative, advisory, and consultative purposes ONLY, and is NOT to be construed or used as a legal description. Users of the information contained in this product are strongly cautioned to verify all information before making any decisions. All users are solely accountable for his/her own abilities to explore/use MCPC public spaces in a safe and responsible manner. This work, and/or the data contained herein and in all of our products, may not be modified, reproduced, used to prepare derivative works, or commercially exploited in any manner without the prior written consent of the Morris County Park Commission.

The surface of the Patriots' Path treadway varies with locality and terrain. Two miles of paved path run from Lake Rd. to Washington Valley Rd. in Morris Township. Other sections are stabilized with crushed stone and gravel, and still others are left as narrow paths on each and rock. Several miles lie on cinder and gravel beds of old railroad lines in Morris and Chester Townships. Boots with ankle support are recommended when hiking this trail network.